

70·71·72  
BOAT QUAY



FULLY REFURBISHED WATERFRONT RESTAURANT & BAR  
**SPACE FOR LEASE**



## PROPERTY HIGHLIGHTS



Three contiguous shophouses with unobstructed views of the iconic Singapore River and Civic District



Strategically located within the Singapore River precinct, a major F&B enclave, with high footfall from CBD offices, residential and tourists



Newly refurbished units comprising of 5 spaces with brand new lift and full F&B provisions



Benefit from the Singapore River One (SRO) waterfront Outdoor Refreshment Area (ORA) which was recently completed



## BOAT QUAY OVERVIEW

Boat Quay has a distinct history being at the heart of Singapore trade and economic activities as warehouses along the Singapore River in the 1800's and from the 1980's readapting into restaurants and bars. Boat Quay has become a major F&B precinct in Singapore and recently further enhanced through the Singapore River One (SRO) waterfront rejuvenation initiative which includes a brand new waterfront Outdoor Refreshment Area (ORA).

70 – 72 Boat Quay sits right on the riverfront, with unobstructed views of Singapore's most iconic buildings in the Civic District – The Parliament House, Supreme Court, Victoria Theatre, the National Gallery and Marina Bay Sands.

70 – 72 Boat Quay comprises 5 units for lease across 3 floors ranging from 1,200 to 3,350sf each with upper floors serviced by a newly installed lift and 2 units featuring private terraces on the 3rd floor.

With limited supply of conservation properties along the Boat Quay stretch, this is a unique leasing opportunity that enjoys significant footfall from neighboring offices, residential and tourism throughout the day.







### 70 BOAT QUAY

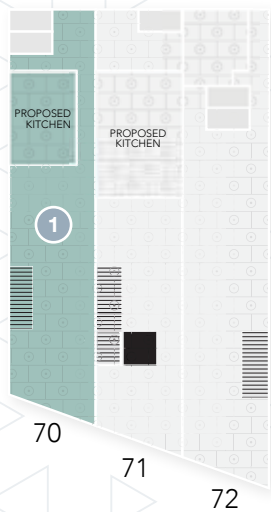
	Units	Estimated Area (sf)
1	F&B	1,200
2	BAR	1,200
3	Office/Retail/Fitness	1,000

### 71/72 BOAT QUAY

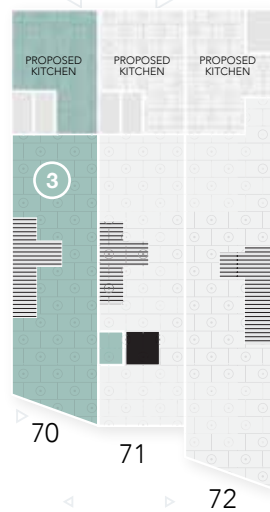
	Units	Estimated Area (sf)
4	F&B	3,500

# FLOORPLANS

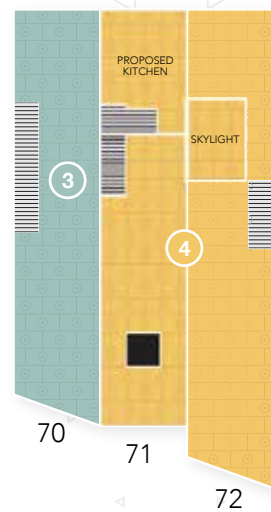
1<sup>ST</sup>  
STOREY PLAN



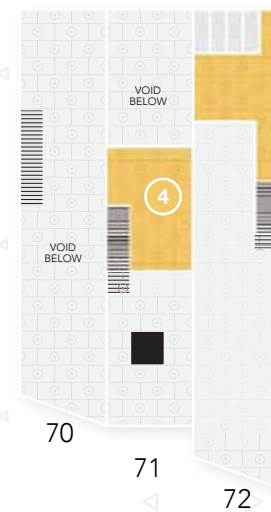
2<sup>ND</sup>  
STOREY PLAN



3<sup>RD</sup>  
STOREY PLAN



ATTIC PLAN



6

A RARE OPPORTUNITY TO LEASE  
**FULLY REFURBISHED WATERFRONT**  
F&B SPACE IN THE HEART OF  
**SINGAPORE'S CBD**



For Leasing Inquiries, Please Contact:

**Leasing:** +65 9783 9673 | **Office:** +65 6323 0452 | **Email:** info@8mre.com

The landlord gives notice that the particular do not constitute, nor constitute as any part of an offer or a contract. All descriptions, dimensions, and other particulars are given in good faith and are believed to be correct but any intending purchasers or tenants should not rely on them as statements or representations of fact and must satisfy themselves by inspection or otherwise as to the correctness of each of them. There is no representation or warranty whatsoever in relation to this property.